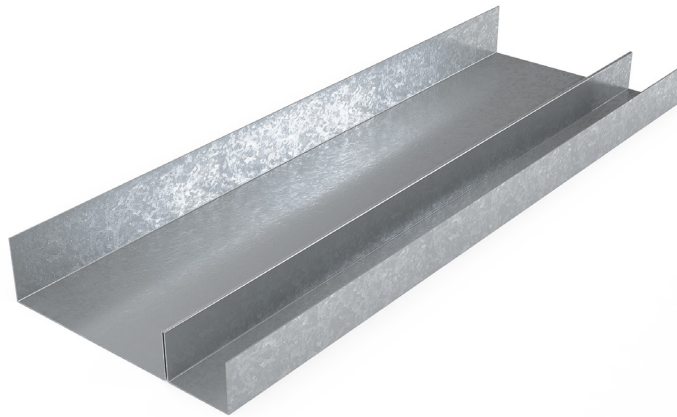


MADA E-STUD

Technical Data Sheet

TDS-MM-R08-Rev2 E-Stud - 2024



Product Description

Mada E-Studs are extremely lightweight and typically used as starter and end studs, as well as door openings, and wall intersections. The 25 mm gaps at the flange allow for the friction-fit of Mada PLUS Shaft Board. The Mada E-Stud is made from cold-rolled steel using a Hot-Dipped Galvanization process conforming to ASTM 653.

Field of Application

- Shaft Walls
- Lift Shafts
- Fire Rated stud ceiling systems in staircases



CERTIFIED
CLEAN AIR GOLD



Tested and Certified to meet and exceed ASTM E119 for Fire Rated Systems

[For More Info Please Sign In or Register](#)