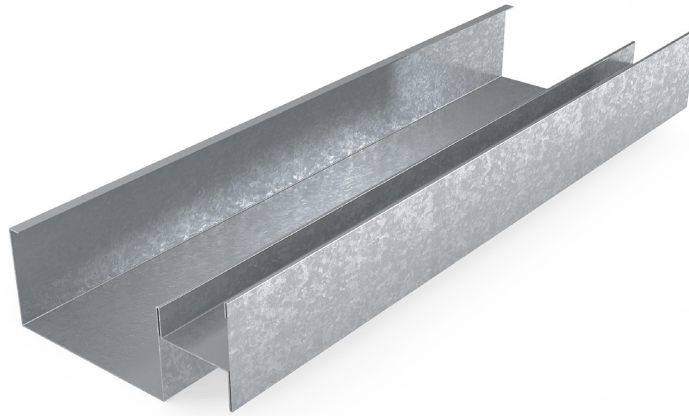


MADA CH-STUD

Technical Data Sheet

TDS-MM-R07-Rev2 CH-Stud - 2024



Product Description

Manufactured from cold-rolled steel using a Hot-Dipped Galvanization process conforming to ASTM 653, Mada CH-Studs install vertically on 600mm spacing between the top and bottom wall tracks for Shaft Wall assemblies.

Field of Application

- Shaft Walls
- Lift Shafts
- Fire Rated stud ceiling systems in staircases



CERTIFIED
CLEAN AIR GOLD



Tested and Certified to meet and exceed ASTM E119 for Fire Rated Systems

For More Info Please Sign In or Register