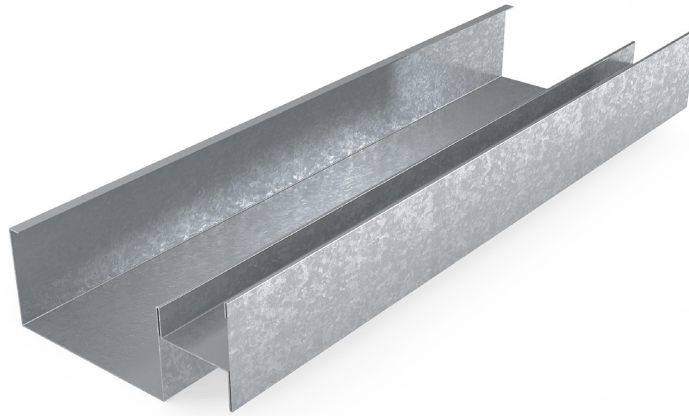


# MADA CH-STUD

## Technical Data Sheet

TDS-MM-R07-Rev2 CH-Stud - 2024



### Product Description

Manufactured from cold-rolled steel using a Hot-Dipped Galvanization process conforming to ASTM 653, Mada CH-Studs install vertically on 600mm spacing between the top and bottom wall tracks for Shaft Wall assemblies.

### Field of Application

- Shaft Walls
- Lift Shafts
- Fire Rated stud ceiling systems in staircases



CERTIFIED  
CLEAN AIR GOLD



*Tested and Certified to meet and exceed ASTM E119 for Fire Rated Systems*



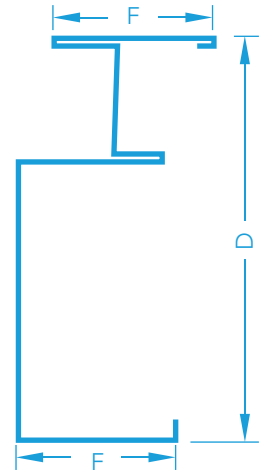
# TECHNICAL DATA SHEET

## Manufacturing Standards

- All Mada Metal Profiles are manufactured to meet or exceed ASTM C645 and ASTM C955.
- Galvanized Steel Coils meet or exceed ASTM A653.
- For recommended storage and installation, please refer to ASTM C754 and ASTM C1007.

## Product Characteristics

Description	Technicals Parameters
Coating	Z120, Z180 & Z275
Yield Strength	240MPa - 310MPa
Tensile Strength	340MPa - 420MPa
Material	Galvanized Steel
Flanges (mm) (F)	38/35
Lip (mm)	4.5, 5.0, 5.5 & 6.0
Length	Minimum 3m and varies as per project requirement
Thickness (mm), [TCT]	0.55, 0.60, 0.70, 0.80, 0.90, 1.00, 1.20
Sizes (mm), [Depth] (D)	64, 100, & 150



## Recommendations

- Use Mada Wafer Head Screw for metal-to-metal connection.
- Use Mada Wall J-Runner Track and Mada J-Runner Deflection Head Track for Shaft partition installation.
- Contact [technical@madagypsum.com](mailto:technical@madagypsum.com) for additional information.

## Material Storage and Handling

- Metal products are available in both pack and sub-pack quantities and should be handled in accordance with the recommendations contained in Local Health and Safety at Work Principles and Practices.
- Use only properly trained and licensed operators when for mechanical lifting or movement.
- Store metal products away from airborne contaminants such as acid or salt spray in an environmentally friendly area.
- Always wash hands for personal hygiene and before eating/drinking. Those with sensitive skin conditions should seek medical advice before prolonged handling of metal products.
- When cutting metal profiles, always wear non-fogging goggles for maximum eye protection.
- Consult the Mada System Guide for additional information about related systems and installations.
- Refer to Mada Safety Data Sheet for additional guidance with health and safety, storage, and handling.

## Cold-Formed Steel Design References

- North American Specification for the Design of Cold-Formed Steel Structural Members (AISI S100 and AISI S200).
- Analysis and Design of Cold Formed Members per the LRFD and ASD Methods.

## General Notes

- This product should not be used for purposes other than those shown on the Mada Technical Proposal.
- This product is a component of the Mada Plus System. Our System Performance Warranty applies to only framing systems made up entirely of Mada Plus System components.
- As products are improved, Mada Gypsum Company may amend this information as needed, without prior notice. Please refer to [www.madagypsum.com](http://www.madagypsum.com) for the latest information.