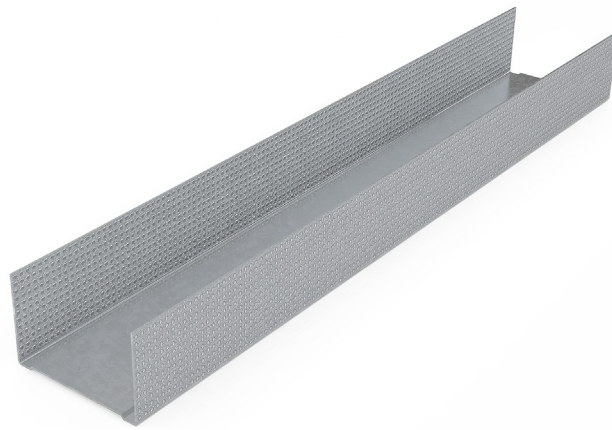


# MADA (U-TRACK) WALL TRACK

## Technical Data Sheet

TDS-MM-R02-Rev2 (U-Track) Wall Track - 2024



### Product Description

Manufactured from cold-rolled steel using a Hot-Dipped Galvanization process conforming to ASTM 653, Mada Wall Track (U-Track) supports the wall or soffit studs of assemblies where vertical deflection is not needed or required. Mada's Wall Track (U-Track) features a knurled surface for superior strength, increased stiffness, and less screw slippage.

### Field of Application

- Non-load bearing partition systems
- Liner systems
- Metal stud ceiling systems
- And other non-load bearing assemblies



CERTIFIED  
CLEAN AIR GOLD



*Tested and Certified to meet and exceed ASTM E119 for Fire Rated Systems*

**For More Info Please Sign In or Register**