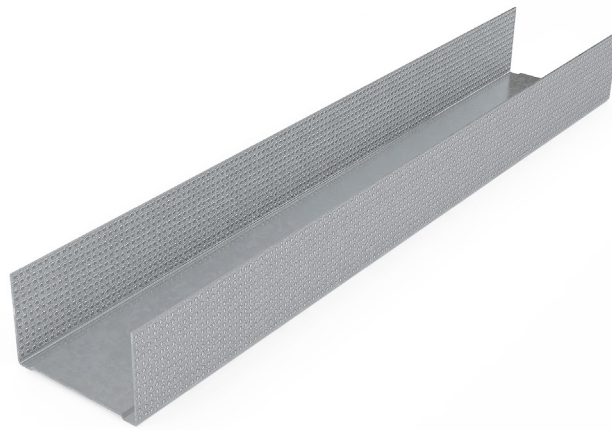


MADA (U-TRACK) WALL TRACK

Technical Data Sheet

TDS-MM-R02-Rev2 (U-Track) Wall Track - 2024



Product Description

Manufactured from cold-rolled steel using a Hot-Dipped Galvanization process conforming to ASTM 653, Mada Wall Track (U-Track) supports the wall or soffit studs of assemblies where vertical deflection is not needed or required. Mada's Wall Track (U-Track) features a knurled surface for superior strength, increased stiffness, and less screw slippage.

Field of Application

- Non-load bearing partition systems
- Liner systems
- Metal stud ceiling systems
- And other non-load bearing assemblies



CERTIFIED
CLEAN AIR GOLD



Tested and Certified to meet and exceed ASTM E119 for Fire Rated Systems



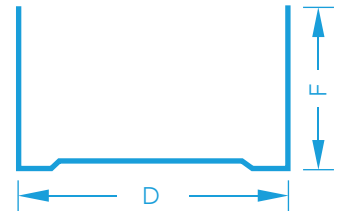
TECHNICAL DATA SHEET

Manufacturing Standards

- All Mada Metal Profiles are manufactured to meet or exceed ASTM C645 and ASTM C955.
- Galvanized Steel Coils meet or exceed ASTM A653.
- For recommended storage and installation, please refer to ASTM C754 and ASTM C1007.

Product Characteristics

Description	Technicals Parameters
Coating	Z120, Z180 & Z275
Yield Strength	240MPa - 310MPa
Tensile Strength	340MPa - 420MPa
Material	Galvanized Steel
Flanges (mm) (F)	32/32, 27/27
Length	3000mm
Thickness (mm), [TCT]	0.50, 0.55, 0.60, 0.70, 0.80, 0.90, 1.00, 1.20 & 1.50.
Sizes (mm), [Depth] (D)	42, 50, 60, 62, 70, 75, 90, 92, 100, 125, 150 & 200



Recommendations

- Use Mada Anchors to attach Mada Wall Track on the substrate.
- Use Mada Wafer Head Screw for metal-to-metal connection.
- Use only Mada Wall Stud (C-Stud) for most partition installation.
- Contact technical@madagypsum.com for additional information.

Material Storage and Handling

- Metal products are available in both pack and sub-pack quantities and should be handled in accordance with the recommendations contained in Local Health and Safety at Work Principles and Practices.
- Use only properly trained and licensed operators when for mechanical lifting or movement.
- Store metal products away from airborne contaminants such as acid or salt spray in an environmentally friendly area.
- Always wash hands for personal hygiene and before eating/drinking. Those with sensitive skin conditions should seek medical advice before prolonged handling of metal products.
- When cutting metal profiles, always wear non-fogging goggles for maximum eye protection.
- Consult the Mada System Guide for additional information about related systems and installations.
- Refer to Mada Safety Data Sheet for additional guidance with health and safety, storage, and handling.

Cold-Formed Steel Design References

- North American Specification for the Design of Cold-Formed Steel Structural Members (AISI S100 and AISI S200).
- Analysis and Design of Cold Formed Members per the LRFD and ASD Methods.

General Notes

- This product should not be used for purposes other than those shown on the Mada Technical Proposal.
- This product is a component of the Mada Plus System. Our System Performance Warranty applies to only framing systems made up entirely of Mada Plus System components.
- As products are improved, Mada Gypsum Company may amend this information as needed, without prior notice. Please refer to www.madagypsum.com for the latest information.