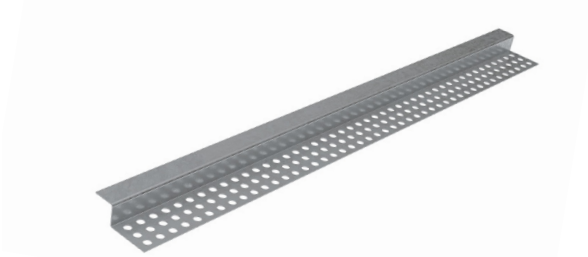


# MADA

## M-50 SHADOW GAP ANGLE

Technical Data Sheet

TDS-ACC-R30-Rev2 M-50 Shadow Gap Angle - 2024



### Product Description

Mada M-50 Shadow Gap Angles are cold-roll formed profiles made from prepainted corrosion resistant hot-dipped galvanized steel conforming to ASTM A-653 and are ideal to use for a quick and easy finishing for external corners. Mada M-50 Shadow Gap Angles are available in a variety of standard and customized sizes.

### Field of Application

Mada M-50 Shadow Gap Angle is installed on ceiling perimeter and walls horizontally giving a gap between the wall and the edge of the ceiling.

### Manufacturing Standards

In compliance with ASTM C1047.

### Product Characteristics

| Parameters        | Details               |
|-------------------|-----------------------|
| Material          | Galvanized Steel      |
| Coating           | Powder Coated         |
| Yield Strength    | 240MPa - 310MPa       |
| Tensile Strength  | 340MPa - 420MPa       |
| Thickness         | 0.45mm                |
| Length            | 3000mm                |
| Plasterboard Type | 12.5mm, 15mm and 16mm |
| Size (mm)         | 10x10x30              |

### Handling and Storage

- Products are supplied in pack and sub-pack quantities and should be handled in accordance with the recommendations contained in Health and Safety at Work Principles and Practice..
- Metal products should be stored in an environmentally-friendly area away from airborne contaminants such as acid and salt sprays.
- People with sensitive skin conditions should seek medical advice before prolonged handling of metal products; hands should be washed before eating and for personal hygiene.
- Non-fogging goggles should be worn when cutting metal sections.

### Installation Guidelines

- Hold bead firmly against corner and nail bead through small holes every on each flange.
- Make sure that staples penetrate the plasterboard.
- The height of staples should not be more than the thickness of plasterboard.
- They can also be fixed with Adhesive or screwed to pass thru the framing at 300 mm centers.
- Drive all nails below nose of corner bead and tightly into flange.
- Joint compound should be covered smoothly and evenly.
- The products should not be used for purposes other than those shown on the Mada Technical Proposal.