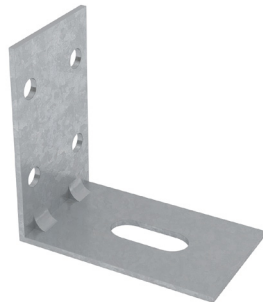


MADA SUSPENSION L-BRACKET

Technical Data Sheet

TDS-ACC-R44-Rev1 Suspension L-Bracket - July 2022



Product Description

Mada specially design L-bracket is typically used as suspension bracket. The rigid structure in the shape of an L, one arm fixed to a vertical (suspension) surface, the other fixed to the support such as ceiling, slab, etc.

Field of Application

Applicable for specially design suspension ceiling systems. Specially engineered product to optimize strength & serviceability design performance on the drywall systems.

Manufacturing Standards

In compliance with ASTM C645 and EN 14195.

Product Characteristics

Parameters	Details
Coating	Zinc Coating Z120
Material	Galvanized Steel
Yield Strength	240MPa - 310MPa
Tensile Strength	340MPa - 420MPa
Thickness [TCT]	1.50mm
Type	Suspension L-Bracket with mini holes
Size [mm]	50 x 30 x 50
Mini Hole Diameter	M5

Handling and Storage

- The dimensions and weight of the packaging vary depending on the size. Consider load centers when loading trucks.
- Puncture resistant gloves and safety goggles should used when handling the product.
- Store in dry conditions.
- The products do not pose a fire hazard. However, the protective coating may be combustible and can emit hazardous fumes. Use suitable extinguishing means: water, foam, carbon dioxide or dry powder.

Cold-Formed Steel Design References

- North American Specification for the Design of Cold-Formed Steel Structural Members (AISI S100, AISI S200).
- Analysis and Design of Cold Formed Members is according to LRFD & ASD Method.
- The products should not be used for purposes other than those shown on the Mada Technical Proposal.

[For More Info Please Sign In or Register](#)