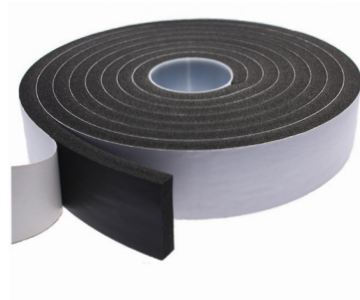


# MADA CLOSED CELL RESILIENT TAPE

Technical Data Sheet

TDS-ACC-R51-Rev1 Closed Cell Resilient Tape - July 2022



## Product Description

Mada Closed Cell Resilient Tape has a strong adhesive carried on brown siliconized release paper offering excellent flexibility and thermal insulation while being a compressive and sound attenuation filler.

Mada Closed Cell Resilient Tape is easy to apply, aging, water, weathering and ozone resistant, while acting as a shock absorber due to its excellent cushioning characteristics. Best results are obtained when applied to clean and dry surfaces.

## Field of Application

Mada Closed Cell Resilient Tape is suitable for cushioning air, water and dust seals, gap-filling surface protection, gasket for anti-vibration and sealing perimeter of Mada Plus System.

## Manufacturing Standards

In compliance with ASTM D-3652, ASTM D-3330, ASTM D-3759, ASTM D-3579 and ASTM D-1667.

## Product Characteristics

Parameters	Details
Appearance	Roll
Adhesive	Acrylic Adhesive
Color	Black
Thickness (mm)	3
Width (mm)	48
Length (m)	7.5
Density (kg/m <sup>3</sup> )	60-70
Elongation	155%
Tensile Strength	1700gm / inch
Adhesion	650-700gm / inch

## Handling and Storage

- Storage and Shelf Life - Indefinite, when stored in cool, dry conditions.
- There are no health hazards associated with the normal use of closed cell resilient tape.

## Installation Guidelines

- Joint or opening must be kept clean, dry and free of obstructions.
- Do not puncture, Stretch.
- Stick the tape to the tracks outer web such that it is at the middle at the web for sizes 50 - 90mm tracks
- For Tracks of 100mm, apply intumescent sealant seal the gap between the track and floor/ceiling on both sides in case the floor is bumpy.
- If the track is above 100mm two rows tape on the outer
- The products should not be used for purposes other than those shown on the Mada Technical Proposal.

For More Info Please Sign In or Register