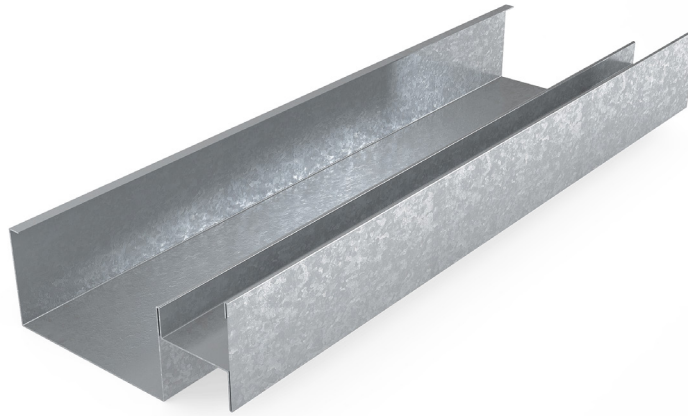


MADA CH-STUD

Technical Data Sheet

TDS-MM-R07-Rev1 CH-STUD - May 2022



Product Description

Manufactured from cold-rolled steel using a Hot-Dipped Galvanization process conforming to ASTM 653, Mada CH-Studs install vertically on 600mm spacing between the top and bottom wall tracks for Shaft Wall assemblies.

Field of Application

- Shaft Walls and Partitions
- Lift Shafts
- Fire Rated stud ceiling systems in Staircases



CERTIFIED
CLEAN AIR GOLD



Tested and Certified to meet and exceed ASTM E119 for Fire Rated Systems

For More Info Please [Sign In](#) or [Register](#)