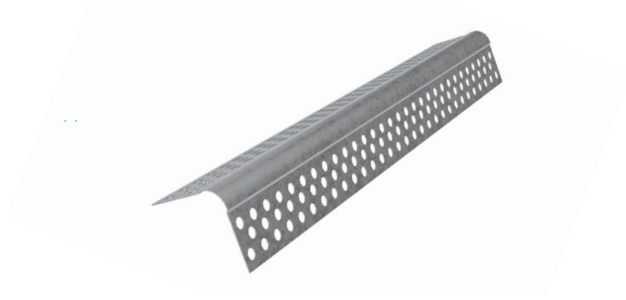


MADA BULL NOSE BEAD

Technical Data Sheet

TDS-ACC-R23-Rev1 Bull Nose Bead - July 2022



Product Description

Mada Bull Nose Beads are ideal for a quick and easy finishing for external corners, helping to soften the corners and avoid easy damage compared to sharp corners. Mada Bull Nose Beads are available in a variety of standard and customized sizes.

Field of Application

Applicable for all Drywall Systems (Except Ceiling System).

Manufacturing Standards

In compliance with ASTM C1047.

Product Characteristics

Parameters	Details
Material	Galvanized Steel
Coating	Z120
Yield Strength	240MPa - 310MPa
Tensile Strength	340MPa - 420MPa
Thickness	0.40mm and 0.50mm
Length	3000mm
Type	Perforated 90° Perforated 135° Expanded 90° Expanded 135°
Standard Size (mm)	25 x 25 and 30 x 30

Handling and Storage

- Products are supplied in pack and sub-pack quantities and should be handled in accordance with the recommendations contained in Health and Safety at Work Principles and Practice.
- Metal products should be stored in an environmentally-friendly area away from airborne contaminants such as acid and salt sprays.
- People with sensitive skin conditions should seek medical advice before prolonged handling of metal products; hands should be washed before eating and for personal hygiene.
- Non-fogging goggles should be worn when cutting metal sections.

Installation Guidelines

- Hold bead firmly against corner and nail bead through small holes every 300 - 400 mm on each flange
- Make sure that staples penetrate the plasterboard.
- The height of staples should not be more than the thickness of plasterboard
- They can also be fixed with Adhesive or screwed to pass thru the framing at 300mm centers.
- Drive all nails below nose of corner bead and tightly into flange.
- Joint compound should be covered smoothly and evenly.
- The products should not be used for purposes other than those shown on the Mada Technical Proposal.

For More Info Please Sign In or Register