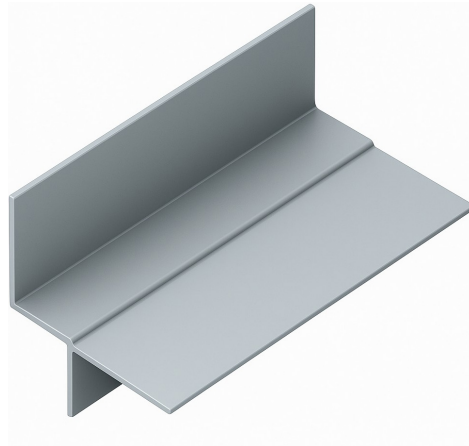


MADA SHADOW GAP TRIM

Technical Data Sheet

TDS-CT-R04-Rev1 Shadow Gap Trim - 2025



Product Description

Mada Shadow Gap Trim is a precision-engineered extruded aluminum shadow gap trim, designed for clean detailing at wall-ceiling or wall-floor junctions. Manufactured from 6063-T6 aluminum alloy, this trim combines strength, durability, and aesthetic functionality. It features a 1.2 mm thickness, with a total height of 33 mm and a two-level horizontal base totaling 30 mm, offering seamless integration into gypsum or drywall systems. Available in lengths of 6000 mm and 3000 mm, it comes in RAL 9010/9003 powder-coated or mill finish options.

Field of Application

Architectural Finishing: Provides a modern, recessed shadow line at transitions between gypsum board and adjacent surfaces.
Drywall Systems: Used at ceiling or floor perimeters to form a clean break, eliminating the need for cornices or sealants.
Interior Design: Enhances minimalistic designs by creating the illusion of floating partitions or ceilings.
Lighting Applications: Can accommodate LED strip lighting to accentuate the shadow gap effect.



TECHNICAL DATA SHEET

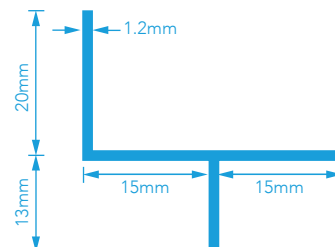
Manufacturing Standards

Mada Shadow Line Trim complies with:

- BS EN 573 - 3 - 2019
- BS EN 755 - 2 - 2016
- BS EN 755 - 9 - 2016
- ASTM B 221M

Technical Specifications

Description	Technicals Parameters
Coating	Aluminum Powder Coated Ral 9010/9003 Mill Finish
Yield Strength 0.2%	>170 MPa
Tensile Strength	>215MPa
Material	Extruded Aluminium
Alloy	6063, Temper T6
Hardness	75BHN
Elongation	0.6%
Length	3000 / 6000 mm
Thickness [TCT]	1.20 mm



Recommendations

- Install using appropriate mechanical fasteners or adhesives based on the substrate.
- Ensure precise alignment during installation to maintain a consistent shadow line.
- For best results, use with 12.5 mm or 15 mm gypsum boards.
- Powder-coated profiles are ideal for exposed interiors; mill finish options should be anodized or painted for corrosion protection in humid conditions.
- Store in a dry, clean area and avoid contact with abrasive materials to preserve surface finish.
- Contact technical@madagypsum.com for additional information.

Material Storage and Handling

- Metal products are available in both pack and sub-pack quantities and should be handled in accordance with the recommendations contained in Local Health and Safety at Work Principles and Practices.
- Use only properly trained and licensed operators when for mechanical lifting or movement. Store metal products away from airborne contaminants such as acid or salt spray in an environmentally friendly area.
- When cutting metal profiles, always wear non-fogging goggles for maximum protection.
- Always wash hands for personal hygiene and before eating/drinking. Those with sensitive skin conditions should seek medical advice before prolonged handling of metal products.
- Consult the Mada System Guide for additional information about related systems and installations. Refer to Mada Safety Data Sheet for additional guidance with health and safety, storage, and handling.

Recommendations

- This product should not be used for purposes other than those shown on the Mada Technical Proposal.
- This product is a component of the Mada Plus System. Our System Performance Warranty applies to only framing systems made up entirely of Mada Plus System components.
- As products are improved, Mada Gypsum Company may amend this information as needed, without prior notice. Please refer to www.madagypsum.com for the latest information.