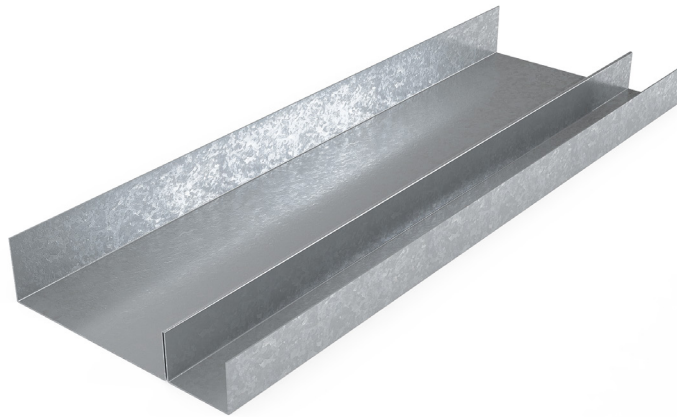


# MADA E-STUD

## Technical Data Sheet

TDS-MM-R08-Rev1 E-STUD - May 2022



### Product Description

Mada E-Studs are extremely lightweight and typically used as starter and end studs, as well as door openings, and wall intersections. The 25 mm gaps at the flange allow for the friction-fit of Mada PLUS Shaft Board. The Mada E-Stud is made from cold-rolled steel using a Hot-Dipped Galvanization process conforming to ASTM 653.

### Field of Application

- Shaft Walls and Partitions
- Lift Shafts
- Fire Rated stud ceiling systems in Staircases



CERTIFIED  
CLEAN AIR GOLD



*Tested and Certified to meet and exceed ASTM E119 for Fire Rated Systems*



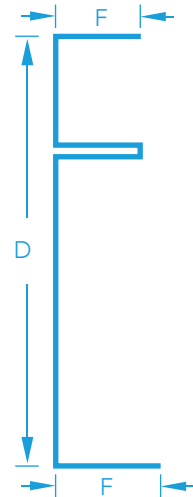
# TECHNICAL DATA SHEET

## Manufacturing Standards

- All Mada Metal Profiles are manufactured to meet or exceed ASTM C645 and ASTM C955.
- Galvanized Steel Coils meet or exceed ASTM A653.
- For recommended storage and installation, please refer to ASTM C754 and ASTM C1007.

## Product Characteristics

Description	Technicals Parameters
Coating	Z120, Z180 & Z275
Yield Strength	240MPa - 310MPa
Tensile Strength	340MPa - 420MPa
Material	Galvanized Steel
Flanges (mm) (F)	25/19
Lip (mm)	4.5, 5.0, 5.5 & 6.0
Length	Minimum 3m and varies as per project requirement
Thickness (mm), [TCT]	0.55, 0.80, 0.90, 1.00, 1.20
Sizes (mm), [Depth] (D)	64, 100, & 150



## Recommendations

- Use Mada Wafer Head Screw for metal-to-metal connection.
- Use Mada Wall J-Runner Track and Mada J-Runner Deflection Head Track for Shaft partition installation.
- Contact [technical@madagypsum.com](mailto:technical@madagypsum.com) for additional information.

## Material Storage and Handling

- Metal products are available in both pack and sub-pack quantities and should be handled in accordance with the recommendations contained in Local Health and Safety at Work Principles and Practices.
- Use only properly trained and licensed operators when for mechanical lifting or movement.
- Store metal products away from airborne contaminants such as acid or salt spray in an environmentally friendly area.
- Always wash hands for personal hygiene and before eating/drinking. Those with sensitive skin conditions should seek medical advice before prolonged handling of metal products.
- When cutting metal profiles, always wear non-fogging goggles for maximum eye protection.
- Consult the Mada System Guide for additional information about related systems and installations.
- Refer to Mada Safety Data Sheet for additional guidance with health and safety, storage, and handling.

## Cold-Formed Steel Design References

- North American Specification for the Design of Cold-Formed Steel Structural Members (AISI S100 and AISI S200).
- Analysis and Design of Cold Formed Members per the LRFD and ASD Methods.

## General Notes

- This product should not be used for purposes other than those shown on the Mada Technical Proposal.
- This product is a component of the Mada Plus System. Our System Performance Warranty applies to only framing systems made up entirely of Mada Plus System components.
- As products are improved, Mada Gypsum Company may amend this information as needed, without prior notice. Please refer to [www.madagypsum.com](http://www.madagypsum.com) for the latest information.