

MADA ■
GYPSUM

METAL PROFILES

AND ACCESSORIES



Issue No. 01 | July 2022



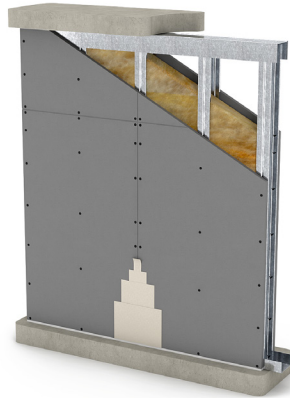
METAL PROFILES AND ACCESSORIES

Mada Metal Profiles are precision-engineered, high-quality steel sections that are used to form the metal substructure of Mada Drywall Systems. All metal sections are produced from high-grade hot dip galvanized steel coils with the cold rolled forming process, providing maximum protection against corrosion.

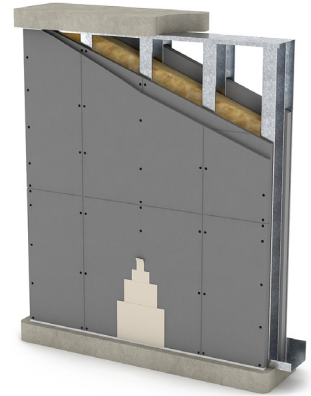
Mada Metal Profiles are specially designed to work and perform together with Mada gypsum boards and accessories to create complete, tested and certified systems. They come in a wide range of sizes and options allowing designers to find solutions that exactly match their requirements.

APPLICATION AREAS

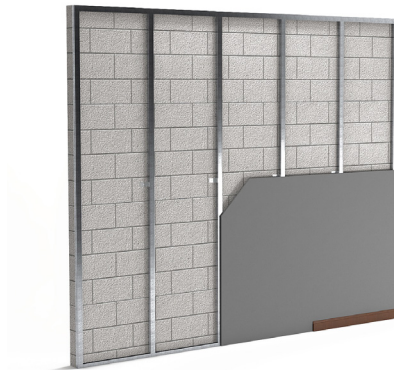
a. Partition Walls



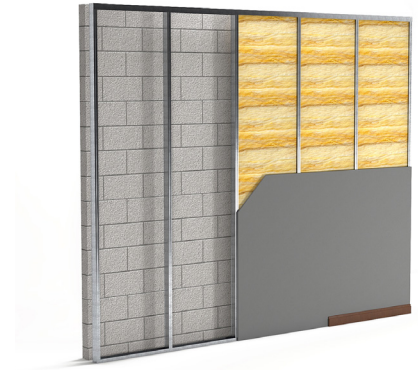
b. Shaft Wall



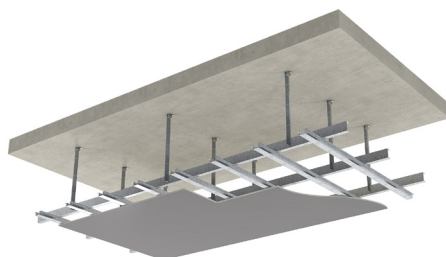
c. Braced Liner



d. Independent Liner



e. Ceiling

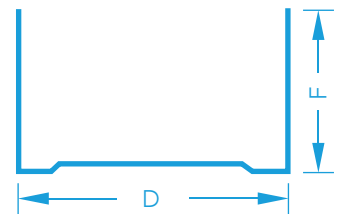


METAL PROFILES

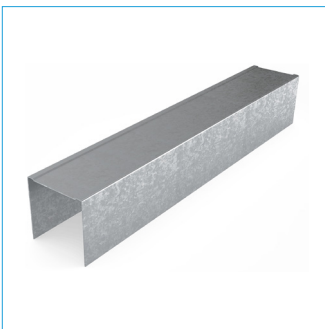


Wall Track (U-Track)

Description	Technical Parameters
Coating	Z120, Z180 & Z275
Yield Strength	240MPa - 310MPa
Tensile Strength	340MPa - 420MPa
Material	Galvanized Steel
Flanges (mm) (F)	32/32, 27/27
Length	3000 mm
Thickness (mm), [TCT]	0.50, 0.55, 0.60, 0.70, 0.80, 0.90, 1.00, 1.20 & 1.50.
Sizes (mm), [Depth] (D)	42, 50, 60, 62, 70, 75, 90, 92, 100, 125, 150 & 200

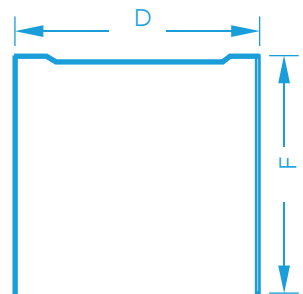


Manufactured from cold-rolled steel using a Hot-Dipped Galvanization process conforming to ASTM 653, Mada Wall Track (U-Track) supports the wall or soffit studs of assemblies where vertical deflection is not needed or required. Mada's Wall Track (U-Track) features a knurled surface for superior strength, increased stiffness, and less screw slippage.



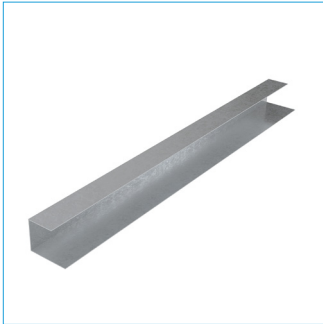
DHT Track

Description	Technical Parameters
Coating	Z120, Z180 & Z275
Yield Strength	240MPa - 310MPa
Tensile Strength	340MPa - 420MPa
Material	Galvanized Steel
Flanges (mm) (F)	50/50
Length	3000 mm
Thickness (mm), [TCT]	0.50, 0.55, 0.60, 0.70, 0.80, 0.90, 1.00, 1.20 & 1.50.
Sizes (mm), [Depth] (D)	42, 50, 60, 62, 70, 75, 90, 92, 100, 125, 150 & 200



Mada DHT (Deflection Head Track) supports the wall or soffit studs, allowing for the vertical deflection of floor beams and floor decks above. Our DHT track features a knurled surface for superior strength, increased stiffness, and less screw slippage.

METAL PROFILES



Furring Track

Parameters	Details
Material	Galvanized Steel
Coating	Z60 and Z120
Yield Strength	240MPa - 310MPa
Tensile Strength	340MPa - 420MPa
Thickness	0.40mm, 0.45mm and 0.50mm
Flanges (mm)	29/19
Length	3000mm
Sizes (mm), [Depth]	23

Mada Furring Track fabricated from hot-dipped galvanised steel coils conforming to ASTM 653 and through cold rolled process, used at the floor for cladding and around perimeter of ceiling to support the Furring Channel.



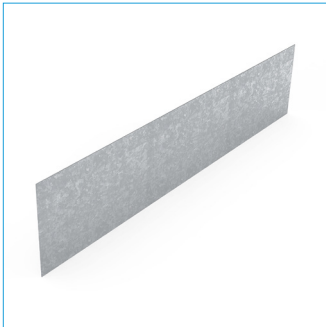
Fixing Channel

Description	Technicals Parameters
Coating	Z120, Z180 & Z275
Yield Strength	240MPa - 310MPa
Tensile Strength	340MPa - 420MPa
Material	Galvanized Steel
Flanges (mm) (F)	12/12, 10/10
Length	3000 mm
Thickness (mm), [TCT]	0.55, 0.60, 0.70, 0.80, 0.90, 1.00, 1.20, 1.50
Sizes (mm), [Depth] (D)	72



Made from cold-rolled steel coils, the Mada Fixing Channel is normally used for covering up horizontal cuts of the gypsum board, for brazing with twin frame wall systems, and to provide additional support for intermediate and heavy weight fixtures and devices.

METAL PROFILES

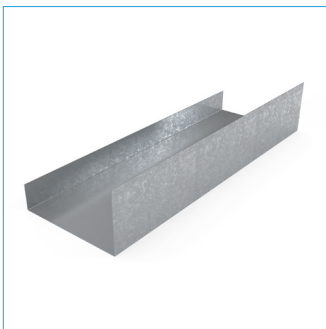


Flat Strap

Description	Technical Parameters
Coating	Z120, Z180 & Z275
Yield Strength	240MPa - 310MPa
Tensile Strength	340MPa - 420MPa
Material	Galvanized Steel
Length	3000 mm
Thickness (mm), [TCT]	0.50, 0.55, 0.60, 0.70, 0.80, 0.90, 1.00, 1.20, 1.50
Sizes (mm), [Depth] (D)	58mm & 62mm

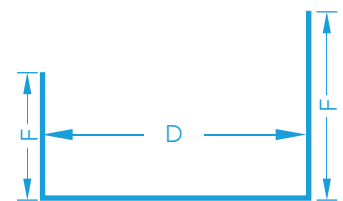


Made from cold-rolled steel coils, the Mada Flat Strap is normally used for covering up horizontal cuts of the gypsum board, for brazing with twin frame wall systems, and to provide additional support for intermediate and heavy weight fixtures and devices.



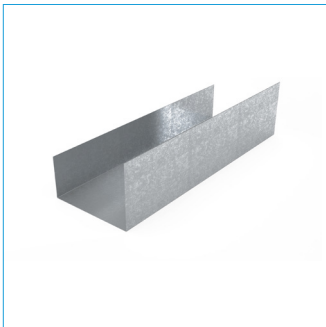
**J-Runner
Deflection Head**

Description	Technical Parameters
Coating	Z120, Z180 & Z275
Yield Strength	240MPa - 310MPa
Tensile Strength	340MPa - 420MPa
Material	Galvanized Steel
Flanges (mm) (F)	75/50
Length	3000 mm
Thickness (mm), [TCT]	0.55, 0.80, 0.90, 1.00, 1.20
Sizes (mm), [Depth] (D)	64, 100, & 150



Manufactured from cold-rolled steel using a Hot-Dipped Galvanization process conforming to ASTM 653, our studs connect to the J Runner Deflection Head via a friction fit for both CH-Stud and E-Stud. In addition to being suitable for both Fire Rated and Non-Fire Rated wall assemblies, the J Runner Deflection Head can also be used for slip-joint requirements.

METAL PROFILES

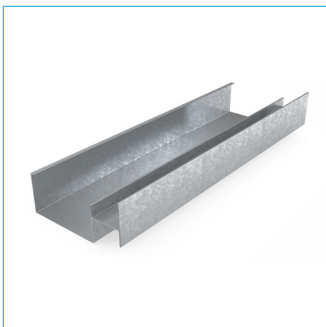


J-Runner

Description	Technical Parameters
Coating	Z120, Z180 & Z275
Yield Strength	240MPa - 310MPa
Tensile Strength	340MPa - 420MPa
Material	Galvanized Steel
Flanges (mm) (F)	57/25
Length	3000 mm
Thickness (mm), [TCT]	0.55, 0.80, 0.90, 1.00, 1.20
Sizes (mm), [Depth] (D)	64, 100, & 150

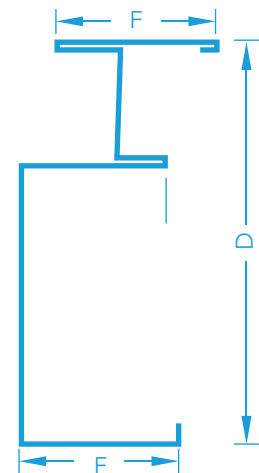


Manufactured from cold-rolled steel using a Hot-Dipped Galvanization process conforming to ASTM 653, our studs connect to the J Runner track via a friction fit for both CH-Stud and E-Stud. In addition to being suitable for both Fire Rated and Non-Fire Rated wall assemblies, the J Runner track can also be used for slip-joint requirements.



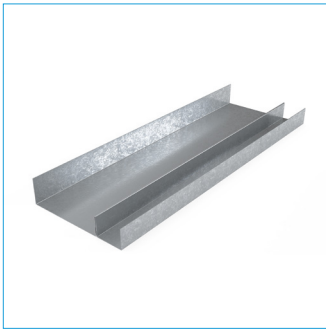
CH-Stud

Description	Technical Parameters
Coating	Z120, Z180 & Z275
Yield Strength	240MPa - 310MPa
Tensile Strength	340MPa - 420MPa
Material	Galvanized Steel
Flanges (mm) (F)	38/35
Lip (mm)	4.5, 5.0, 5.5 & 6.0
Length	Minimum 3m and varies as per project requirement
Thickness (mm), [TCT]	0.55, 0.80, 0.90, 1.00, 1.20
Sizes (mm), [Depth] (D)	64, 100, & 150



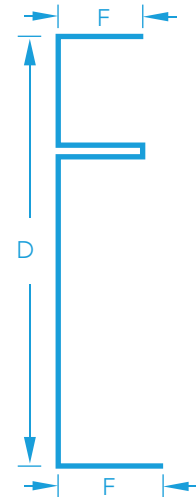
Manufactured from cold-rolled steel using a Hot-Dipped Galvanization process conforming to ASTM 653, Mada CH-Studs install vertically on 600mm spacing between the top and bottom wall tracks for Shaft Wall assemblies.

METAL PROFILES



E-Stud

Description	Technical Parameters
Coating	Z120, Z180 & Z275
Yield Strength	240MPa - 310MPa
Tensile Strength	340MPa - 420MPa
Material	Galvanized Steel
Flanges (mm) (F)	25/19
Lip (mm)	4.5, 5.0, 5.5 & 6.0
Length	Minimum 3m and varies as per project requirement
Thickness (mm), [TCT]	0.55, 0.80, 0.90, 1.00, 1.20
Sizes (mm), [Depth] (D)	64, 100, & 150

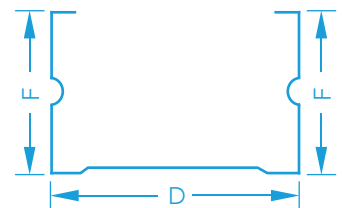


Mada E-Studs are extremely lightweight and typically used as starter and end studs, as well as door openings, and wall intersections. The 25 mm gaps at the flange allow for the friction-fit of Mada Plus Shaft Board. The Mada E-Stud is made from cold-rolled steel using a Hot-Dipped Galvanization process conforming to ASTM 653.



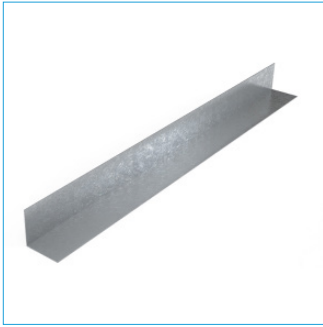
Wall Stud (C-Stud)

Description	Technical Parameters
Coating	Z120, Z180 & Z275
Yield Strength	240MPa-310MPa
Tensile Strength	340MPa - 420MPa
Material	Galvanized Steel
Flanges (mm) (F)	32/32, 34/36
Lip (mm)	4.5, 5.0, 5.5 & 6.0
Length	Minimum 3m and varies as per project requirement
Thickness (mm), [TCT]	0.50, 0.55, 0.60, 0.70, 0.80, 0.90, 1.00, 1.20 & 1.50.
Sizes (mm), [Depth] (D)	40, 48, 58, 68, 73, 90, 98, 148 & 198



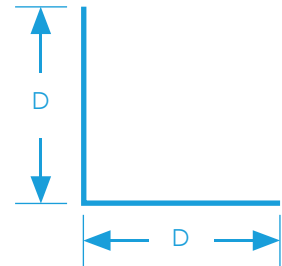
Manufactured from cold-rolled steel using a Hot-Dipped Galvanization process conforming to ASTM 653, our studs connect the top and bottom wall tracks via a friction fit. Mada's Wall Studs (C-Stud) feature a knurled surface for superior strength, increased stiffness, and less screw slippage.

METAL PROFILES



**(L-Angle)
Wall Angle**

Description	Technical Parameters
Coating	Z120, Z180 & Z275
Yield Strength	240MPa - 310MPa
Tensile Strength	340MPa - 420MPa
Material	Galvanized Steel
Length	3000 mm
Thickness (mm), [TCT]	0.45, 0.50, 0.55, 0.60, 0.70, 0.80, 0.90, 1.20
Sizes (mm), [Depth] (D)	25 x 25, 35 x 35, 50 x 50, Unequal angle as per project requirements



Made from cold-rolled steel and featuring a knurled surface for superior strength, increased stiffness, and less screw slippage, Mada Wall Angle attaches to the wall with mechanical fasteners to provide support for intermediate channels.



Main Channel

Description	Technical Parameters
Coating	Z120, Z180 & Z275
Yield Strength	240MPa - 310MPa
Tensile Strength	340MPa - 420MPa
Material	Galvanized Steel
Flanges (mm) (F)	10/10, 11/11, 12/12
Length	3000 mm
Thickness (mm), [TCT]	0.40, 0.50, 0.55, 0.60, 0.70, 0.80, 0.90, 1.20, 1.50
Sizes (mm), [Depth] (D)	38, 45



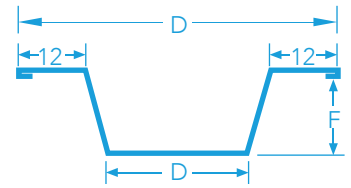
Mada Main Channels are the structural component of a metal stud ceiling system and are typically supported from the structure above with rigid hangers, adjustable clips, or hooked and tied wires. Our Main Channels feature a knurled surface for superior strength, increased stiffness, and less screw slippage.

METAL PROFILES

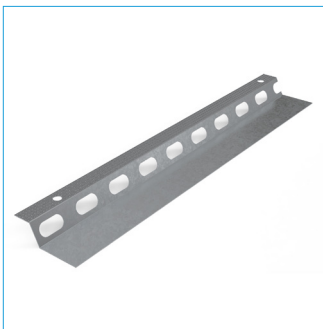


Hat Shaped Furring Channel

Description	Technicals Parameters
Coating	Z120, Z180 & Z275
Yield Strength	240MPa - 310MPa
Tensile Strength	340MPa - 420MPa
Material	Galvanized Steel
Flanges (mm) (F)	22/22
Length	3000 mm
Thickness (mm), [TCT]	0.40, 0.50, 0.55, 0.60, 0.70, 0.80, 0.90, 1.20
Sizes (mm), [Depth] (D)	70 x 35, 85 x 50

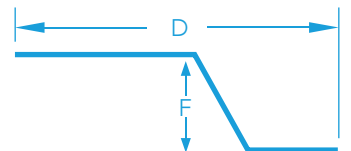


The Hat Shaped Furring Channel can be used to furr-out (align) one surface to another before applying final finish materials. They are the secondary support of a metal stud ceiling system, attaching perpendicular to the Mada Main Channels. Our Hat Shaped Channel also features a knurled surface for superior strength, increased stiffness, and less screw slippage.



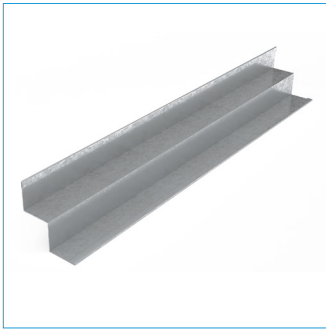
Resilient Channel

Description	Technicals Parameters
Coating	Z120, Z180 & Z275
Yield Strength	240MPa - 310MPa
Tensile Strength	340MPa - 420MPa
Material	Galvanized Steel
Flange	14 mm
Length	3000 mm
Thickness (mm), [TCT]	0.40, 0.50, 0.55, 0.60, 0.70, 0.80, 0.90, 1.20
Sizes (mm)	40 x 13.5, 45 x 17



The Mada Resilient Channel work like an acoustical barrier, isolating the gypsum board from the framing system to minimize the contact area. Sound waves are disrupted as they attempt to travel through floor and wall assemblies and into adjoining areas, improving sound isolation performance.

METAL PROFILES



W Angle

Parameters	Details
Material	Galvanized Steel and PVC
GI Coating	Z120
PVC Coating (RAL)	9001, 9003, 9010 and 9016
Yield Strength	240MPa - 310MPa
Tensile Strength	340MPa - 420MPa
Thickness	0.45mm
Length	3000mm
Size (mm)	20 x 20 x 20 x 20 and 20 x 15 x 15 x 20

Mada W Angles are cold-roll formed profiles made from pre-painted corrosion resistant hotdipped galvanized steel and conforming to ASTM A-653.

They are ideal to use for a quick and easy finishing for your external corners. The beads are available in a variety of standard and customized sizes. They can be fixed to the sheet of plasterboard with an adhesive or staples, with the finishing coats bonding into the plasterboard and feathering up to the bead nib.

ACCESSORIES



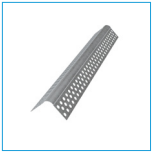
Mada UDZ Wedge Anchor

Combines the principle of a bolt anchor with that of a simple hammer set anchor, where no tightening torque is required. The anchor expands automatically under the load of the application and pulls the cone into the expansion sleeve.



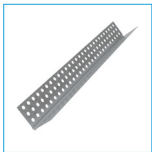
Mada C-Clamp

Is designed to hold the primary ceiling channel to soffit by means of a threaded rod.



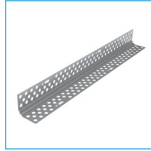
Mada Bull Nose Bead

The Bull Nose Beads are ideal for a quick and easy finishing for your external corners. The beads help soften the corners and avoid easy damage compared to sharp corners and are available in a variety of standard and customized sizes.



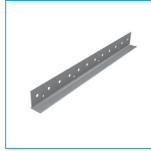
Mada Corner Bead (External)

The Corner Beads (External) are ideal for a quick and easy finishing for your external corners.



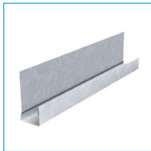
Mada Corner Bead (Internal)

The Corner Beads (Internal) are ideal for a quick and easy finishing for your internal corners. The beads are available in a variety of standard and customized sizes. They can be fixed to the sheet of plasterboard with an adhesive or staples, with the finishing coats bonding into the plasterboard and feathering up to the bead nib.



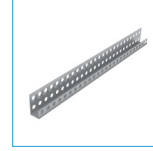
Mada L-Bead

The L Beads have a perforated, recessed edge and are used where the edge of the plasterboard is not exposed and where the fitting of a Stopping Bead would be difficult. The L Bead is fixed to the sheet of plasterboard with an adhesive or staples, with the finishing coats bonding into the plasterboard and feathering up to the bead nib.



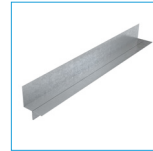
Mada LC - Bead (J - Shaped)

The LC Beads (J-Shaped) are ideal for Mada's Plasterboards of 12.5mm to 16mm thick. The finishing coats are applied up to the nib, which is blended back into the sheets.



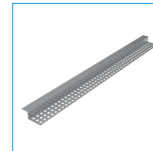
Mada Stopping Bead

Mada Shadow Gap Angles are cold-roll formed profiles made from pre-painted corrosion resistant hotdipped galvanized steel and conforming to ASTM A-653. They are ideal to use for a quick and easy finishing for your external corners. The beads are available in a variety of standard and customized sizes.



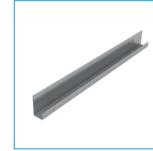
Mada Shadow Gap

Mada Shadow Gap Angles are cold-roll formed profiles made from pre-painted corrosion resistant hotdipped galvanized steel and conforming to ASTM A-653.



Mada M-50 Shadow Gap

Mada M-50 Shadow Gap Angles are cold-roll formed profiles made from pre-painted corrosion resistant hotdipped galvanized steel and conforming to ASTM A-653.



Mada Casing Bead

The Casing Beads serve as plaster blocks and are square cornered metal beads that fit snugly over the edge of Plasterboards for protection at abutments, whilst no setting required. Upon installation, the Casing Beads allow Jointing compound to maintain a straight line and may then be easily painted at site.

ACCESSORIES



Mada Trubolt Stud Anchor

Trubolt Stud Anchor is a true-to-size, heavy duty, torque controlled expansion anchor, for permanent anchoring into concrete. The anti-rotation expansion sleeve is designed to grip the sides of the hole, preventing anchor rotation during installation.



Mada PLUS Drop-in Anchor

Drop-In-Anchors are an all-steel, medium duty expansion anchor designed to provide a permanent anchorage point in concrete substrates. An internal thread allows for use with both machine bolts and threaded rod, with no restrictions on fixture thickness.



Mada Threaded Rod

Mada Threaded Rod features threads along the entire length. Threaded rods are used to suspend ceilings with one end fixed to the concrete slab / beams or any other structure with suitable fixings and the other end to the ceiling framework.



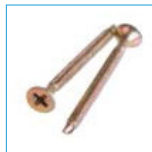
Mada Wafer Head Self Drilling Screw

Mada Wafer Head Self Drilling screws with a head diameter of 11mm are designed for assembling steel framing components for up to 3.0mm thick.



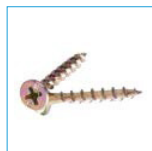
Mada Self Tapping Screw

Mada Self Tapping bugle head screws is the ability of the screw to advance while creating its own thread. It is used for fastening drywall and other accessories mounting on steel structures below 0.8mm thick.



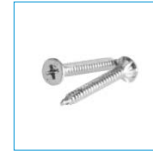
Mada Self Drilling Screw

Mada Self Drilling bugle head screws also known as Tek screws, eradicate the need for a pre-drilled hole and allow drilling and tie to be done in the same motion. It is used for fastening drywall and other accessories mounting on steel structures from 0.90mm up to 3.0mm thick.



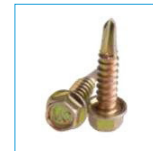
Mada Laminating Self Tapping Screw

Laminating bugle head screws are designed to temporarily attach Mada plasterboard to plasterboard when gluing or laminating. This screw features a coarse thread design and great holding power.



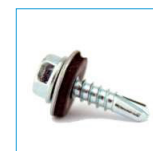
Mada Procem Self Drilling Screw

Mada Procem Self Drilling screw with ribs under head has the ability to advance while creating its own thread and also drills for seating of screw head. It is used for fastening Mada Procem cement board and other accessories mounting on steel structures up to 1.20mm thick.



Mada Hex Head Self Drilling Screw

Mada Hex Head Self Drilling screws are used to fasten metal to metal or metal and other accessories from 0.8mm up to 3.0mm thick. It has very good tensile strength. High-torque hex head for fast framing and metal work.



Mada Hex Washer Head Self Drilling Screw

Hex washer head self drilling screws are used to fasten metal to metal or metal and other accessories from 0.8mm up to 3.0mm thick. It has very good tensile strength. High-torque hex head for fast framing and metal work.

ACCESSORIES



Mada Adjustable Furring Channel Clip

Mada Adjustable Furring Channel Clips are used to provide adjustment for masonry walls, CMU, block wall & ceiling. This eliminates the need for packers and extra fasteners & more accurate installation. Once the clip is securely fastened onto the wall or ceiling, the furring channel can be snapped in without the need of any extra fasteners. This clip can accommodate 75mm & 85mm furring channel.



Mada Slotted L-Bracket

Mada specially design L-bracket is typically used to transfer loads in external wall/heavy load attachment/high rise partition where deflection allowance is needed. The rigid structure in the shape of an L, one arm fixed to a vertical (Stud) surface, the other fixed to the support such as Wall, Ceiling, Slab, etc.



Mada Suspension L-Bracket

Mada specially design L-bracket is typically used as suspension bracket. The rigid structure in the shape of an L, one arm fixed to a vertical (suspension) surface, the other fixed to the support such as ceiling, slab, etc.



Glasswool Insulation

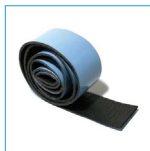
An insulating material consisting of fine, long, inorganic fibers bonded together by a high-temperature binder. Excellent acoustic properties, lightweight, high-tensile strength, with exceptional resilience.



Mada Acoustic V-Brace

Mada Acoustic V-brace is designed for bracing twin stud frames and to enhance its acoustic performance. V-brace is made from spring steel to optimize acoustic performance. Spring steel acoustic brace (For bracing twin wall partitions).

Note: This product is not for use in ceiling applications.



Mada Closed Cell Resilient Tape

Mada Closed Cell Resilient Tape has a strong adhesive, and carried on Brown siliconized release paper. The tape has excellent flexibility and suitable for thermal insulation, compressive filler & Sound attenuation fill.



Mada Access Panel

Mada Access panels are gypsum based built in accessories for Mada Plus drywall systems. Mada Access Panels are great for allowing access to service areas for plumbing, electrical, security systems, telephone, computer cables, sprinkler systems and more.



Spit Hit M

Mada Approved Spit Hit M Anchor is a hammer-set anchor for light duty fixings designed to provide a permanent anchorage point in concrete.



Beam Clamp

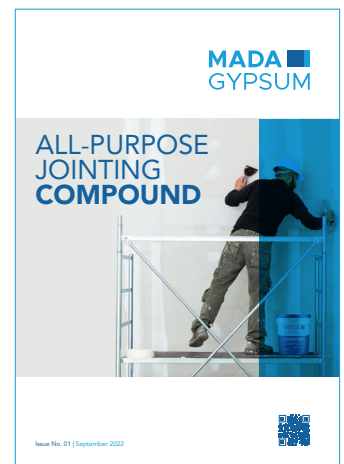
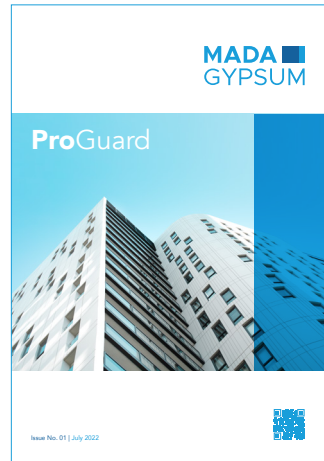
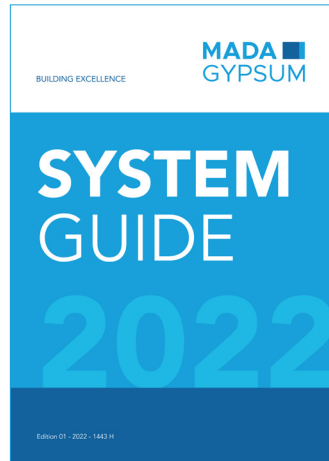
Mada Beam Clamp is made from galvanized cast iron, offering a simple and portable mean of attaching a hoist to a runway or lifting beam. Set screw must be tightened and torqued onto the flanges of the I-beam as per specs.



Acoustic Hanger

The Mada Acoustic Hanger is a sturdy U-shaped bracket with a lip on one end. The acoustic hanger has a vibration-dampening rubber component that is built to accommodate an internal threading for a threaded rod, which effectively dampens vibrations even at low frequencies, acoustically separating structure from ceiling.

OTHER RESOURCES



* For additional information consult Mada Technical Team

Metal Profiles

Head Office: P.O.Box 31542, Yanbu Al Sinayah 51000 Kingdom of Saudi Arabia
Tel.: + 966 14 325 3253 | Fax: + 966 14 325 0420