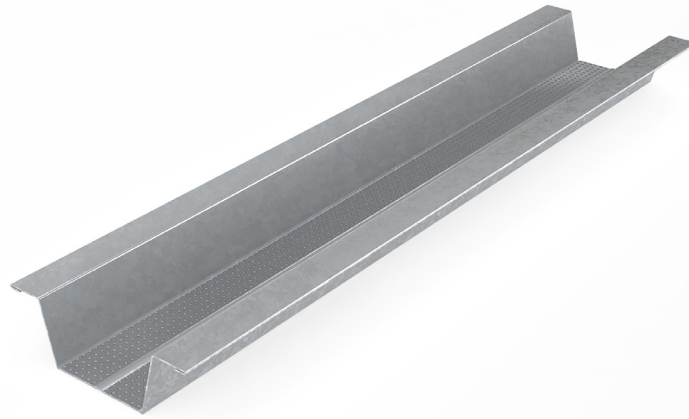


MADA (HAT SHAPE) FURRING CHANNEL

Technical Data Sheet

TDS-MM-R13-Rev1 (HAT SHAPE) FURRING CHANNEL - May 2022



Product Description

The Hat Shaped Furring Channel can be used to furr-out (align) one surface to another before applying final finish materials. They are the secondary support of a metal stud ceiling system, attaching perpendicular to the Mada Main Channels. Our Hat Shaped Channel also features a knurled surface for superior strength, increased stiffness, and less screw slippage.

Field of Application

- Metal stud ceiling systems
- Liner Systems
- And other non-load bearing assemblies



CERTIFIED
CLEAN AIR GOLD



Tested and Certified to meet and exceed ASTM E119 for Fire Rated Systems

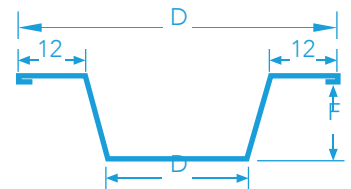
TECHNICAL DATA SHEET

Manufacturing Standards

- All Mada Metal Profiles are manufactured to meet or exceed ASTM C645 and ASTM C955.
- Galvanized Steel Coils meet or exceed ASTM A653.
- For recommended storage and installation, please refer to ASTM C754 and ASTM C1007.

Product Characteristics

Description	Technicals Parameters
Coating	Z120, Z180 & Z275
Yield Strength	240MPa - 310MPa
Tensile Strength	340MPa - 420MPa
Material	Galvanized Steel
Flanges (mm) (F)	22/22
Length	3000 mm
Thickness (mm), [TCT]	0.40, 0.50, 0.55, 0.60, 0.70, 0.80, 0.90, 1.20
Sizes (mm), [Depth] (D)	70 x 35, 85 x 50



Recommendations

- Use Mada Wafer Head Screw for metal-to-metal connection.
- Use Mada Wire Clip to attach Furring Channel with Mada Main Channel.
- Use only Mada Ceiling System components and accessories for guaranteed performance.
- Related components: Mada Main Channel, Mada Wall Angle, Mada Shadow Gap Angle and Mada Threaded Rod.
- Contact technical@madagypsum.com for additional information.

Material Storage and Handling

- Metal products are available in both pack and sub-pack quantities and should be handled in accordance with the recommendations contained in Local Health and Safety at Work Principles and Practices.
- Use only properly trained and licensed operators when for mechanical lifting or movement.
- Store metal products away from airborne contaminants such as acid or salt spray in an environmentally friendly area.
- Always wash hands for personal hygiene and before eating/drinking. Those with sensitive skin conditions should seek medical advice before prolonged handling of metal products.
- When cutting metal profiles, always wear non-fogging goggles for maximum eye protection.
- Consult the Mada System Guide for additional information about related systems and installations.
- Refer to Mada Safety Data Sheet for additional guidance with health and safety, storage, and handling.

Cold-Formed Steel Design References

- North American Specification for the Design of Cold-Formed Steel Structural Members (AISI S100 and AISI S200).
- Analysis and Design of Cold Formed Members per the LRFD and ASD Methods.

General Notes

- This product should not be used for purposes other than those shown on the Mada Technical Proposal.
- This product is a component of the Mada Plus System. Our System Performance Warranty applies to only framing systems made up entirely of Mada Plus System components.
- As products are improved, Mada Gypsum Company may amend this information as needed, without prior notice. Please refer to www.madagypsum.com for the latest information.