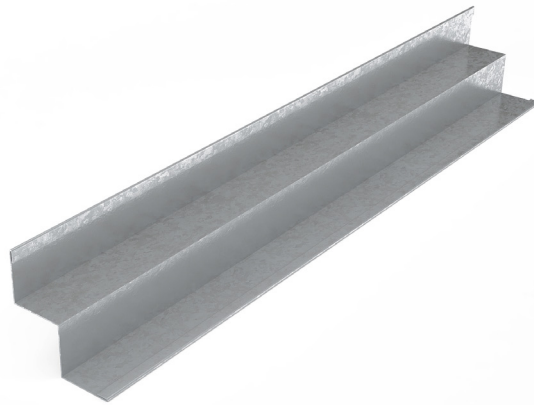


MADA W-Angle

Technical Data Sheet

TDS-MM-R15-Rev1 W-Angle - July 2022



For protection of drywall / plaster edges from damage.



Light Weight Construction



Ease and Fast Installation

Product Description

Mada W Angles are cold-roll formed profiles made from pre-painted corrosion resistant hotdipped galvanized steel and conforming to ASTM A-653. They are ideal to use for a quick and easy finishing for your external corners. The beads are available in a variety of standard and customized sizes. They can be fixed to the sheet of plasterboard with an adhesive or staples, with the finishing coats bonding into the plasterboard and feathering up to the bead nib.

Field of Application

Applicable in all Drywall Systems, for establishing of exact and vertically oriented edges.



CERTIFIED CLEAN AIR GOLD



Tested and Certified to meet and exceed ASTM E119 for Fire Rated Systems



TECHNICAL DATA SHEET

Manufacturing Standards

Mada Trim Accessories comply to ASTM C1047

Product Characteristics

Parameters	Details
Material	Galvanized Steel and PVC
GI Coating	Z120
PVC Coating (RAL)	9001, 9003, 9010 and 9016
Yield Strength	240MPa - 310MPa
Tensile Strength	340MPa - 420MPa
Thickness	0.45mm
Length	3000mm
Size (mm)	20 x 20 x 20 x 20 and 20 x 15 x 15 x 20

Handling and Storage

- Products are supplied in pack and sub-pack quantities and should be handled in accordance with the recommendations contained in Health and Safety at Work Principles and Practice..
- Metal products should be stored in an environmentally-friendly area away from airborne contaminants such as acid and salt sprays.
- People with sensitive skin conditions should seek medical advice before prolonged handling of metal products; hands should be washed before eating and for personal hygiene.
- Non-fogging goggles should be worn when cutting metal sections.

Installation Guidelines

- Hold bead firmly against corner and nail bead through small holes every on each flange.
- Make sure that staples penetrate the plasterboard.
- The height of staples should not be more than the thickness of plasterboard.
- They can also be fixed with Adhesive or screwed to pass thru the framing at 300mm centers.
- Drive all nails below nose of corner bead and tightly into flange.
- Joint compound should be covered smoothly and evenly.

General Note

The products should not be used for purposes other than those shown on the Mada Technical Proposal.