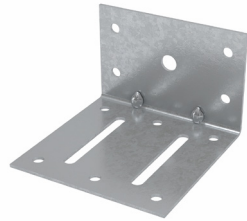


MADA SLOTTED L-BRACKET WITH MINI HOLES

Technical Data Sheet

TDS-ACC-R43-Rev1 Slotted L-Bracket - July 2022



Product Description

Mada specially design L-bracket is typically used to transfer loads in external wall/heavy load attachment / high rise partition where deflection allowance is needed. The rigid structure in the shape of an L, one arm fixed to a vertical (stud) surface, the other fixed to the support such as Wall, Ceiling, Slab, etc.

Field of Application

Applicable for specially design drywall partition, ceiling & shaft systems. Specially engineered product to optimize strength & serviceability design performance on the drywall systems.

Manufacturing Standards

In compliance with ASTM C645 and EN 14195.

Product Characteristics

Parameters	Details
Coating	Zinc Coating Z120
Material	Galvanized Steel
Yield Strength	240MPa and 310MPa
Tensile Strength	340MPa and 420MPa
Thickness [TCT]	1.50mm and 3.0mm
Packing [Unit]	Clip, Anchor, Nut & Washer
Type	Slotted Bracket with Mini Holes
Size [mm]	50 x 45 x 75, 50 x 75 x 75, 50 x 80 x 75 and 50 x 125 x 75
Mini Hole Diameter	M5 and M5.5
Slotted Hole Diameter	M8 and M10

Handling and Storage

- The dimensions and weight of the packaging vary depending on the size. Consider load centers when loading trucks.
- Puncture resistant gloves and safety goggles should used when handling the product.
- Store in dry conditions.
- The products do not pose a fire hazard. However, the protective coating may be combustible and can emit hazardous fumes. Use suitable extinguishing means: water, foam, carbon dioxide or dry powder.

Cold-Formed Steel Design References

- North American Specification for the Design of Cold-Formed Steel Structural Members (AISI S100, AISI S200).
- Analysis and Design of Cold Formed Members is according to LRFD & ASD Method.
- The products should not be used for purposes other than those shown on the Mada Technical Proposal.